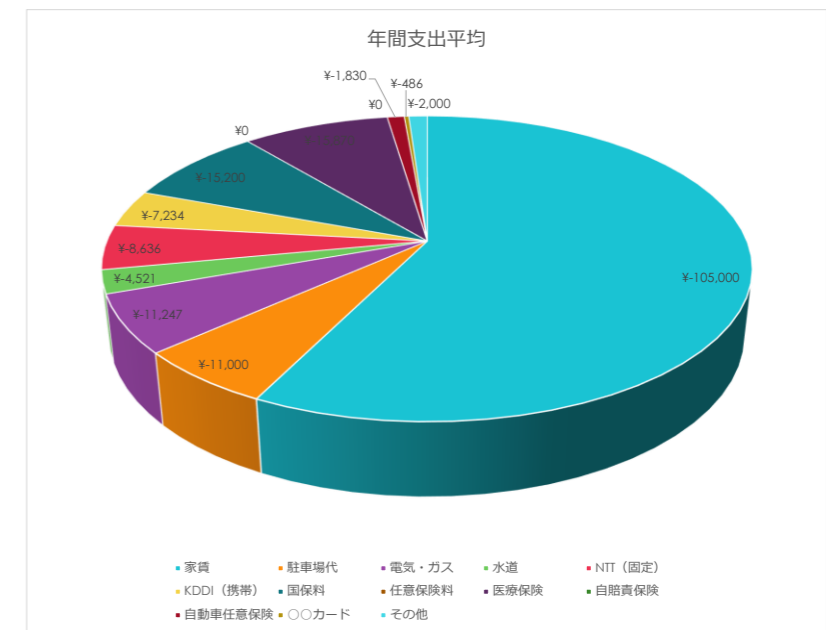
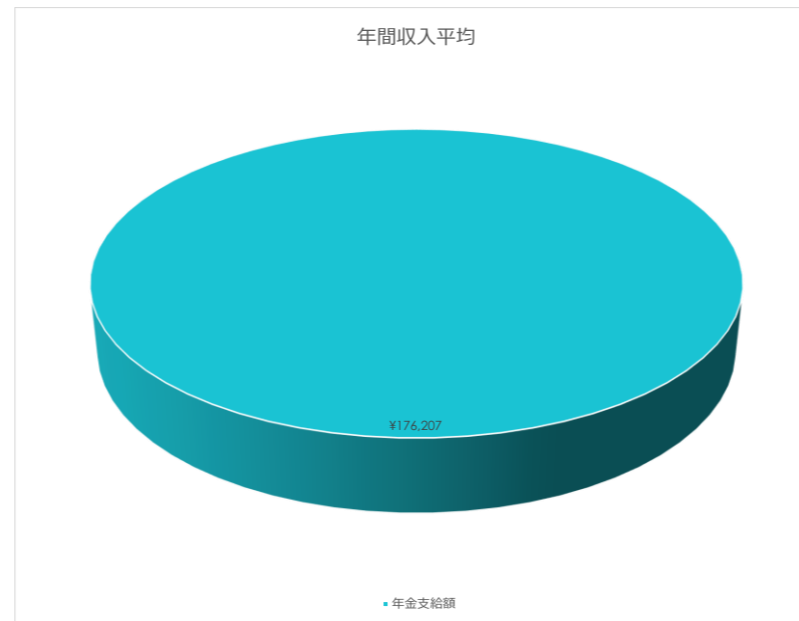
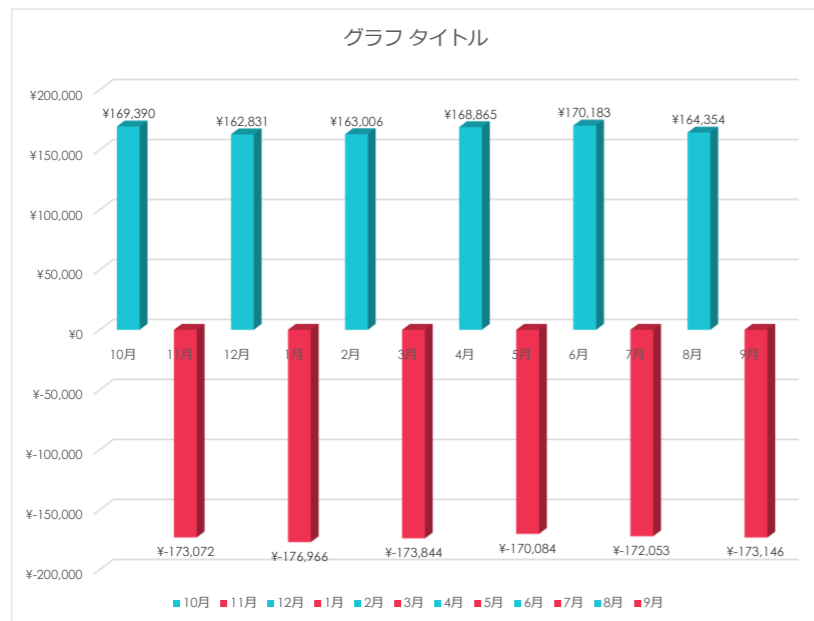




マネープランニング

月	年金支給額	家賃	駐車場代	電気・ガス	水道	NTT (固定)	KDDI (携帯)	国保料	任意保険料	医療保険	自賠責保険	自動車任意保険	〇〇カード	その他	収支結果
10月	¥352,414	¥-105,000	¥-11,000	¥-11,247	¥-4,521	¥-8,636	¥-7,234	¥-15,200	¥0	¥-15,870	¥0	¥-1,830	¥-486	¥-2,000	¥169,390
11月	¥0	¥-105,000	¥-11,000	¥-14,256	¥0	¥0	¥-7,421	¥-15,200	¥0	¥-15,870	¥0	¥-1,830	¥-495	¥-2,000	¥-173,072
12月	¥352,414	¥-105,000	¥-11,000	¥-18,232	¥-3,944	¥-8,636	¥-7,376	¥-15,200	¥0	¥-15,870	¥0	¥-1,830	¥-495	¥-2,000	¥162,831
1月	¥0	¥-105,000	¥-11,000	¥-18,353	¥0	¥0	¥-7,219	¥-15,200	¥0	¥-15,870	¥0	¥-1,830	¥-494	¥-2,000	¥-176,966
2月	¥352,416	¥-105,000	¥-11,000	¥-17,223	¥-4,643	¥-8,636	¥-7,523	¥-15,200	¥0	¥-15,870	¥0	¥-1,830	¥-485	¥-2,000	¥163,006
3月	¥0	¥-105,000	¥-11,000	¥-15,334	¥0	¥0	¥-7,124	¥-15,200	¥0	¥-15,870	¥0	¥-1,830	¥-486	¥-2,000	¥-173,844
4月	¥352,414	¥-105,000	¥-11,000	¥-12,534	¥-3,563	¥-8,636	¥-7,421	¥-15,200	¥0	¥-15,870	¥0	¥-1,830	¥-495	¥-2,000	¥168,865
5月	¥0	¥-105,000	¥-11,000	¥-11,253	¥0	¥0	¥-7,435	¥-15,200	¥0	¥-15,870	¥0	¥-1,830	¥-496	¥-2,000	¥-170,084
6月	¥352,414	¥-105,000	¥-11,000	¥-11,432	¥-3,245	¥-8,636	¥-7,523	¥-15,200	¥0	¥-15,870	¥0	¥-1,830	¥-495	¥-2,000	¥170,183
7月	¥0	¥-105,000	¥-11,000	¥-13,423	¥0	¥0	¥-7,235	¥-15,200	¥0	¥-15,870	¥0	¥-1,830	¥-495	¥-2,000	¥-172,053
8月	¥352,414	¥-105,000	¥-11,000	¥-16,786	¥-3,421	¥-8,636	¥-7,821	¥-15,200	¥0	¥-15,870	¥0	¥-1,830	¥-496	¥-2,000	¥164,354
9月	¥0	¥-105,000	¥-11,000	¥-14,324	¥0	¥0	¥-7,425	¥-15,200	¥0	¥-15,870	¥0	¥-1,830	¥-497	¥-2,000	¥-173,146
年間合計	¥2,114,486	¥-1,260,000	¥-132,000	¥-174,397	¥-23,337	¥-51,816	¥-88,757	¥-182,400	¥0	¥-190,440	¥0	¥-21,960	¥-5,915	¥-24,000	¥-40,536
年間平均	¥176,207	¥-105,000	¥-11,000	¥-14,533	¥-1,945	¥-4,318	¥-7,396	¥-15,200	¥0	¥-15,870	¥0	¥-1,830	¥-493	¥-2,000	¥-3,378



課題	方針

顧客名	電話番号
住所	メール
備考	